

# DiVeRT Gateway

## Dynamic Virtual Routing Technology



### Traffic Dispersion Across Multiple Secure Tunnels

CACI's DiVeRT Gateway is an internet security appliance that protects the global, wide area network (WAN) interface of a home or office network. It takes all incoming traffic from the local area network (LAN) interface and load balances it across ten or more outbound secure tunnels. These tunnels provide AES-256 bit encryption and the exit points of these tunnels are in multiple cloud service providers (e.g. Amazon Web Services, Google Cloud). For additional security, the tunnel exit points will change IP address and datacenter location hourly, improving network anonymity.

DiVeRT Gateway comes equipped with a user-friendly interface for configuration and traffic steering. Traffic can be filtered by source IP address as well as traffic type and directed through a configurable group of outbound tunnels.

For more information contact:

**CACI Network Modeling  
and Simulation**

[modsim@caci.com](mailto:modsim@caci.com)

---

For more information about our  
expertise and technology, visit:

[www.caci.com](http://www.caci.com)

## Key Features

### Security

- Protects the global WAN IP address
- Seamlessly encrypts all outbound traffic

### Network Anonymity

- Spreads traffic across multiple tunnels
- Each tunnel exit point is a server that dynamically changes

### Dynamic Tunneling Service

- New IP address issued at customizable intervals
- New datacenter location at customizable intervals
- New cloud provider at customizable intervals

### Multihoming and load balancing

- Across multiple interfaces
- Across multiple internet providers
- Across multiple cloud providers

### Flexible Traffic Steering

- Based on source IP address
- Based on traffic type
- Routed to multiple secure tunnels

### Usability

- Plug-and-play using dynamic host configuration protocol
- Basic user interface for administration

## DiVeRT Gateway Specifications

### Performance

CPU	2.2 GHz Intel Xeon processor D-1518
Memory	16 GB
Hard Disk	120 GB

### Interfaces

6 x 1Gb Ethernet Interfaces
2x 10Gb SFP+ Interfaces

### Dimensions

Chassis	Supermicro SYS-E300-8D
Width	10" (254mm) / 15" (381mm) - pkg.
Height	1.7" (43mm) / 10.87" (276mm) - pkg.
Depth	8.9" (226mm) / 5.59" (142mm) - pkg.
Net Weight	3.45 lbs (1.56 kg)

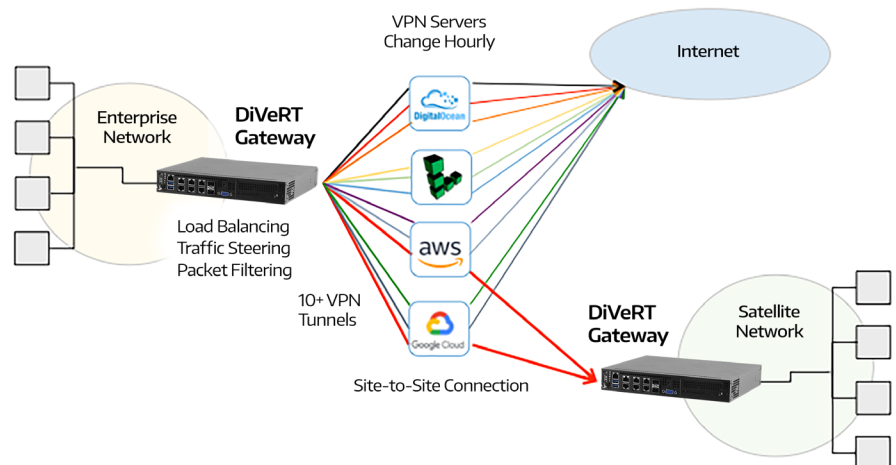
### Software

Load Balancing Software
Virtualization Software
Traffic Steering Management Software
Multihoming Management Software
VPN Client Software
Web User Interface

### Service

1- year subscription to CACI VPN service

## DiVeRT Gateway Diagram



This material consists of CACI International Inc general capabilities information that does not contain controlled technical data as defined within the International Traffic in Arms (ITAR) Part 120.10 or Export Administration Regulations (EAR) Part 734.7-10. (11/24/2020)



EXPERTISE and TECHNOLOGY  
for National Security

At CACI International Inc (NYSE: CACI), our 24,000 talented and dynamic employees are ever vigilant in delivering distinctive expertise and differentiated technology to meet our customers' greatest challenges in national security and government modernization. We are a company of good character, relentless innovation, and long-standing excellence. Our culture drives our success and earns us recognition as a *Fortune* World's Most Admired Company. CACI is a member of the *Fortune* 1000 Largest Companies, the Russell 1000 Index, and the S&P MidCap 400 Index. For more information, visit us at [caci.com](http://caci.com).

#### Worldwide Headquarters

12021 Sunset Hills Road, Reston, VA 20190  
703-841-7800

#### Visit our website at:

[caci.com](http://caci.com)

#### Find Career Opportunities at:

[careers.caci.com](http://careers.caci.com)

#### Connect with us through social media:

