

Spectrum Guard Pro[®]

- **Multiple Receivers in One Unit**
- **Remote Persistent Monitoring**
- **Wireless Detection & Analysis**



The CACI | SystemWare **Spectrum Guard Pro** combines hardware and software into a portable radio frequency (RF) detection and monitoring system that is small, lightweight, and easy to use. The software application interface is accessible by users with minimal RF knowledge, but also provides all the tools an experienced operator needs to accomplish the mission. The Spectrum Guard Pro is intended to be used by security professionals for RF signals collection and analysis in support of static or mobile operations. It is ideal for use to evaluate Wi-Fi and cellular spectrum for unauthorized transmissions.

For more information, or to purchase contact:

CACI | SystemWare Sales
(410) 579-1300
swi-sales@sysware.com

For more information on CACI's expertise and technology, visit:

caci.com

A *Fortune* World's Most Admired Company

EXPERTISE AND TECHNOLOGY FOR NATIONAL SECURITY

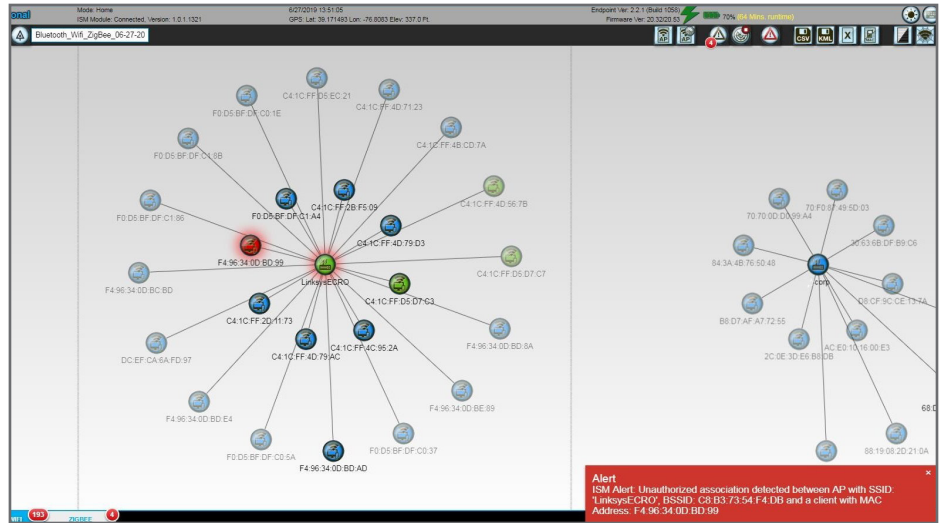
CACI
EVER VIGILANT

Spectrum Guard Pro's intuitive software design meets a range of customer missions:

- Spectrum management
- Wi-Fi detection and signal verification
- RF test and measurement
- Security services
- Federal Communications Commission (FCC) compliance testing
- Executive travel support

Features

- 1 kHz – 26.5 GHz
- Wireless or Ethernet control
- Portable and Lightweight
- User-definable sweep parameters
- Discrete frequency scans with individual channel settings
- Automated and remote functions allow the system to run nattended
- Port switch capable
- Zoom displays for better analysis and signal measurements
- Dynamically adjustable threshold sensitivity
- Signals of interest (SOI) displayed via user-defined limits
- Signals are presented in multiple, easy to read formats



Wireless Collection and Analysis

- 802.11 protocol detection (a,b,g,n and ac)
- 802.11 MAC address display
- SSID detection
- Signal strength
- Hardware manufacturer
- Packet identification and analysis
- PCAP capture and streaming
- Bluetooth protocol detection and MAC address display
- Zigbee protocol detection (700, 800, 900 MHz and 2.4 GHz) and NODE address display
- European Zigbee protocol detection (868/915 MHz)
- MAC/NODE address registration
- Authorized vs. unauthorized lists

Software Functions and Capabilities

- Sweep the RF spectrum with user-defined frequency parameters
- Maximum Sweep up to 240 GHz/sec
- IF record
- Signal fingerprint
- Frequency (channel) scan
- Multiple visual representations of the RF spectrum
- 2D display, waterfall display, and display zooming feature
- SOI frequency list
- Real-time signal analysis
- One-button or automatic audio recording
- Classification of common digital and analog signals
- Video recreation (NTSC/PAL)
- Post-collection data analysis tools
- Consolidated exceedance list
- Colored raster

This material consists of CACI International Inc general capabilities information that does not contain controlled technical data as defined within the International Traffic in Arms (ITAR) Part 120.10 or Export Administration Regulations (EAR) Part 734.7-10. (PR ID317)



EXPERTISE AND TECHNOLOGY
FOR NATIONAL SECURITY

At CACI International Inc (NYSE: CACI), our 23,000 talented and dynamic employees are ever vigilant in delivering distinctive expertise and technology to meet our customers' greatest challenges in national security and government modernization. We are a company of good character, relentless innovation, and long-standing excellence. Our culture drives our success and earns us recognition as a *Fortune* World's Most Admired Company. CACI is a member of the *Fortune* 1000 Largest Companies, the Russell 1000 Index, and the S&P MidCap 400 Index. For more information, visit us at caci.com.

Worldwide Headquarters

12021 Sunset Hills Road, Reston, VA 20190
703-841-7800

Visit our website at:

www.caci.com

Find Career Opportunities at:

<http://careers.caci.com/>

Connect with us through social media:

