

DiVeRT Gateway

Dynamic Virtual Routing Technology



Traffic Dispersion Across Multiple Secure Tunnels

CACI's DiVeRT Gateway is an internet security appliance that protects the global, wide area network (WAN) interface of a home or office network. It takes all incoming traffic from the local area network (LAN) interface and load balances it across ten or more outbound secure tunnels. These tunnels provide AES-256 bit encryption and the exit points of these tunnels are in multiple cloud service providers (e.g. Amazon Web Services, Google Cloud). For additional security, the tunnel exit points will change IP address and datacenter location hourly, improving network anonymity.

DiVeRT Gateway comes equipped with a user-friendly interface for configuration and traffic steering. Traffic can be filtered by source IP address as well as traffic type and directed through a configurable group of outbound tunnels.

For more information contact:

Michael Chen
R&D Technical Director
of InfoSec Research
michael.chen@caci.com

For more information about our solutions, products, and services, visit: www.caci.com

A *Fortune* World's Most Admired Company

EXPERTISE AND TECHNOLOGY FOR NATIONAL SECURITY

CACI
EVER VIGILANT

Key Features

Security

- Protects the global WAN IP address
- Seamlessly encrypts all outbound traffic

Network Anonymity

- Spreads traffic across multiple tunnels
- Each tunnel exit point is a server that dynamically changes

Dynamic Tunneling Service

- New IP address issued at customizable intervals
- New datacenter location at customizable intervals
- New cloud provider at customizable intervals

Multihoming and load balancing

- Across multiple interfaces
- Across multiple internet providers
- Across multiple cloud providers

Flexible Traffic Steering

- Based on source IP address
- Based on traffic type
- Routed to multiple secure tunnels

Usability

- Plug-and-play using dynamic host configuration protocol
- Basic user interface for administration

DiVeRT Gateway Specifications

Performance

CPU	2.2 GHz Intel Xeon processor D-1518
Memory	16 GB
Hard Disk	120 GB

Interfaces

6 x 1Gb Ethernet Interfaces
2x 10Gb SFP+ Interfaces

Dimensions

Chassis	Supermicro SYS-E300-8D
Width	10" (254mm) / 15" (381mm) - pkg.
Height	1.7" (43mm) / 10.87" (276mm) - pkg.
Depth	8.9" (226mm) / 5.59" (142mm) - pkg.
Net Weight	3.45 lbs (1.56 kg)

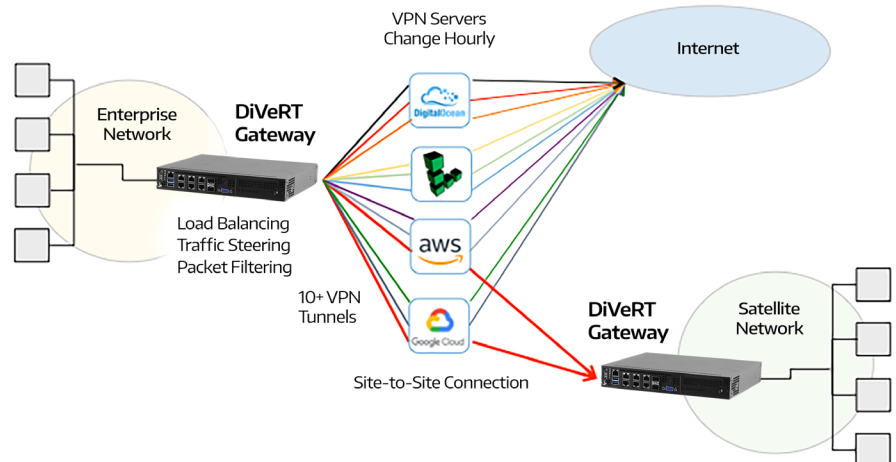
Software

Load Balancing Software
Virtualization Software
Traffic Steering Management Software
Multihoming Management Software
VPN Client Software
Web User Interface

Service

1- year subscription to CACI VPN service

DiVeRT Gateway Diagram



This material consists of CACI International Inc general capabilities information that does not contain controlled technical data as defined within the International Traffic in Arms (ITAR) Part 120.10 or Export Administration Regulations (EAR) Part 734.7-10. (11/24/2020)



EXPERTISE AND TECHNOLOGY
FOR NATIONAL SECURITY

CACI's approximately 23,000 talented employees are vigilant in providing the unique expertise and distinctive technology that address our customers' greatest enterprise and mission challenges. Our culture of good character, innovation, and excellence drives our success and earns us recognition as a *Fortune* World's Most Admired Company. As a member of the *Fortune* 1000 Largest Companies, the Russell 1000 Index, and the S&P MidCap 400 Index, we consistently deliver strong shareholder value. Visit us at www.caci.com.

Worldwide Headquarters

1100 N. Glebe Road, Arlington, VA 22201
703-841-7800

Visit our website at:

www.caci.com

Find Career Opportunities at:

<http://careers.caci.com/>

Connect with us through social media:

